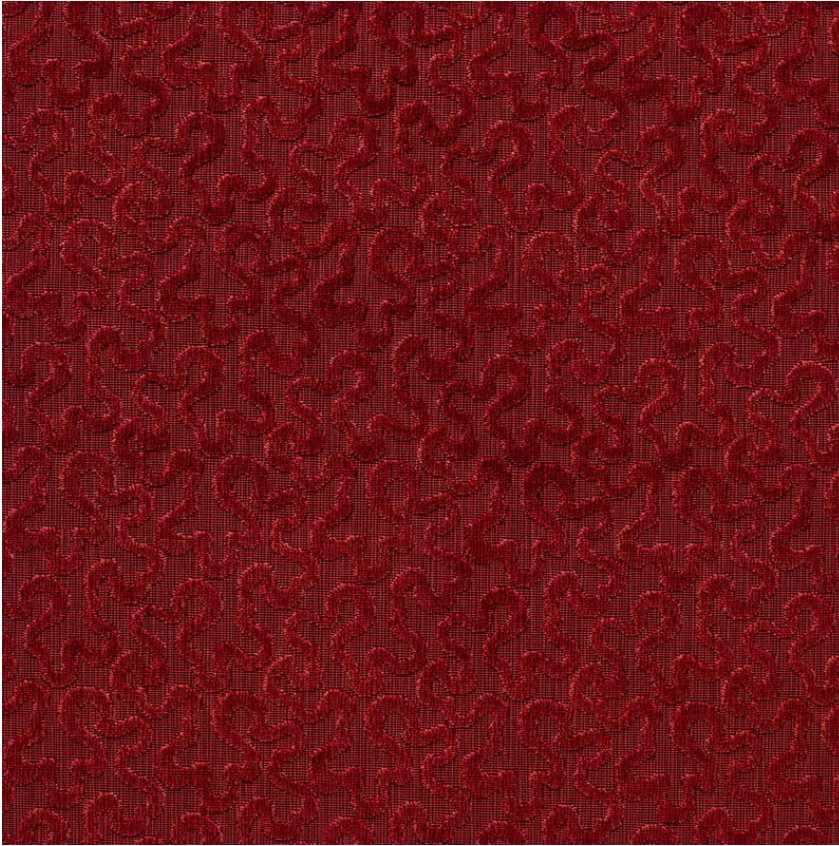


43271

VERMICELLI VELVET

COLOR: GRENADINE TYPE: FABRIC



WHAT MAKES THIS SPECIAL

This classic, cut-and-loop velvet has a soft pile and a subtle strié ground. Also available in hand-stitched embroidery on a linen ground.

To check stock and price, request a physical memo, reserve or place an order, sign in to your account on www.fschumacher.com or our iOS app, or give us a call at **1-800-673-4221**

WIDTH

54" WIDE (137CM)

VERTICAL REPEAT

4 3/4" (12CM)

CONTENT

100% COTTON

LIGHT FASTNESS

UNRATED

HORIZONTAL REPEAT

3 3/8" (9CM)

MATCH

STRAIGHT

PERFORMANCE

MARTINDALE 25,000

COUNTRY OF FINISH

BELGIUM

SCHUMACHER

FABRIC WALLPAPER TRIM FURNITURE CUSTOM/CONTRACT
RUGS AND CARPETS AVAILABLE AT PATTERSONFLYNNMARTIN.COM