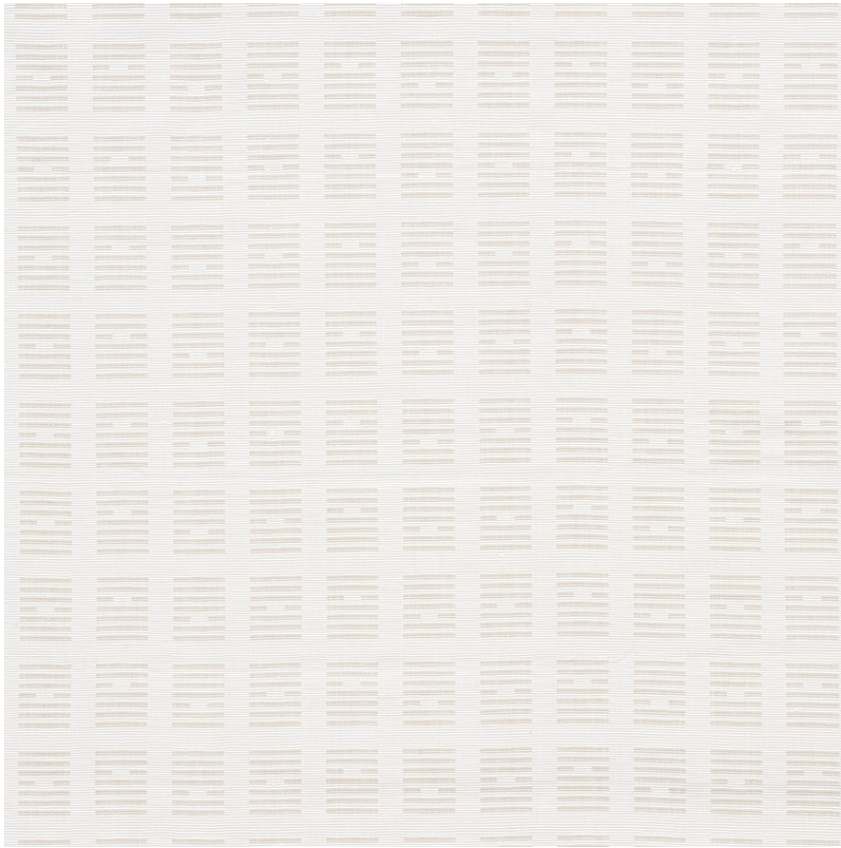


75663

TIASQUAM WEAVE

COLOR: NATURAL TYPE: FABRIC



WHAT MAKES THIS SPECIAL

Based on a painting by Caroline Z Hurley, Tiasquam Weave is a heavyweight, sturdy fabric with a quiet presence.

To check stock and price, request a physical memo, reserve or place an order, sign in to your account on www.fschumacher.com or our iOS app, or give us a call at **1-800-673-4221**

WIDTH
55 3/4" (142CM)

VERTICAL REPEAT
3 1/2" (9CM)

CONTENT
100% COTTON

LIGHT FASTNESS
N/A

HORIZONTAL REPEAT
8 3/4" (22CM)

MATCH
STRAIGHT

PERFORMANCE
MARTINDALE 14,000

COUNTRY OF FINISH
INDIA

SCHUMACHER

FABRIC WALLPAPER TRIM FURNITURE CUSTOM/CONTRACT
RUGS AND CARPETS AVAILABLE AT PATTERSONFLYNNMARTIN.COM