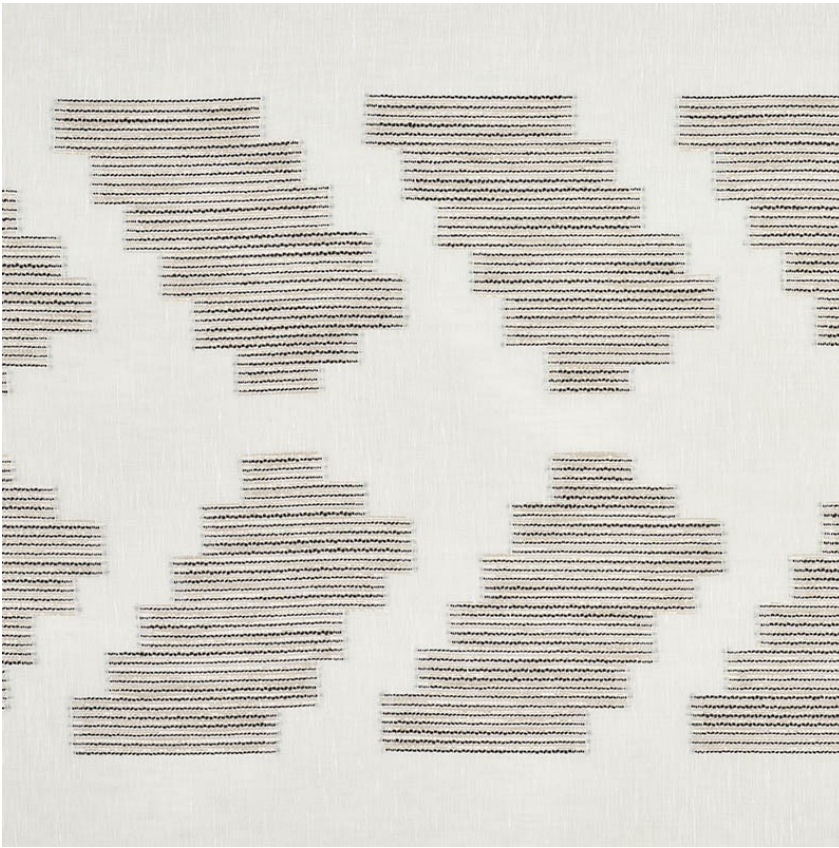


76500

ADIA SHEER

COLOR: MICA TYPE: FABRIC



### WHAT MAKES THIS SPECIAL

A striking fil-coupé design and the addition of metallic threads gives this double-width, linen-blend sheer a hint of shimmer that's sophisticated but unfussy.

To check stock and price, request a physical memo, reserve or place an order, sign in to your account on [www.fschumacher.com](http://www.fschumacher.com) or our iOS app, or give us a call at 1-800-673-4221

WIDTH  
118 1/2" (301CM)

VERTICAL REPEAT  
23 1/2" (60CM)

CONTENT  
60% LINEN, 20%  
POLYACRYLIC, 15%  
COTTON, 5% POLYESTER

LIGHT FASTNESS  
N/A

HORIZONTAL REPEAT  
7 1/2" (19CM)

MATCH  
STRAIGHT - SHOWN AS  
RAILROADED

PERFORMANCE  
N/A

COUNTRY OF FINISH  
TURKEY

SCHUMACHER

FABRIC WALLPAPER TRIM FURNITURE CUSTOM/CONTRACT  
RUGS AND CARPETS AVAILABLE AT [PATTERSONFLYNNMARTIN.COM](http://PATTERSONFLYNNMARTIN.COM)

