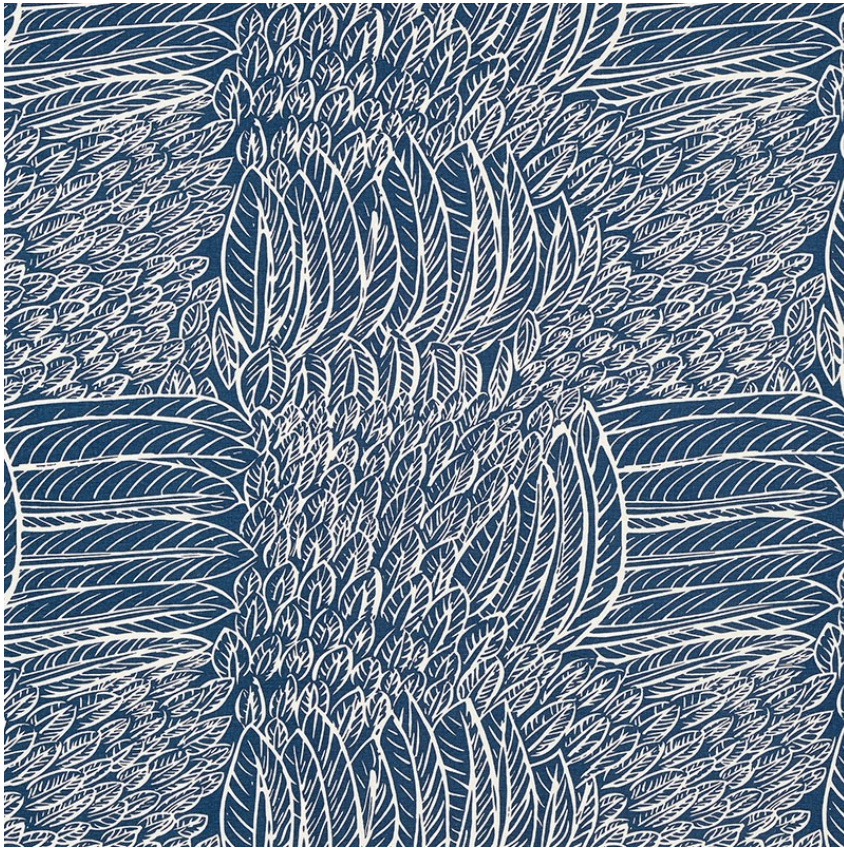


176233

FEATHERFEST

COLOR: NAVY TYPE: FABRIC



#### WHAT MAKES THIS SPECIAL

A captivating plaid-like pattern of juxtaposed, stylized feathers. Inspired by a document in our archives and a favorite of Jacqueline Kennedy Onassis. Also available as a wallcovering.

To check stock and price, request a physical memo, reserve or place an order, sign in to your account on [www.fschumacher.com](http://www.fschumacher.com) or our iOS app, or give us a call at **1-800-673-4221**

#### WIDTH

53" (135CM)

#### VERTICAL REPEAT

24 3/4" (63CM)

#### CONTENT

55% LINEN, 45% COTTON

#### LIGHT FASTNESS

N/A

#### HORIZONTAL REPEAT

26 3/4" (68CM)

#### MATCH

STRAIGHT

#### PERFORMANCE

WYZENBEEK 15,000

#### COUNTRY OF FINISH

UNITED STATES OF AMERICA

## SCHUMACHER

FABRIC WALLPAPER TRIM FURNITURE CUSTOM/CONTRACT  
RUGS AND CARPETS AVAILABLE AT [PATTERSONFLYNNMARTIN.COM](http://PATTERSONFLYNNMARTIN.COM)