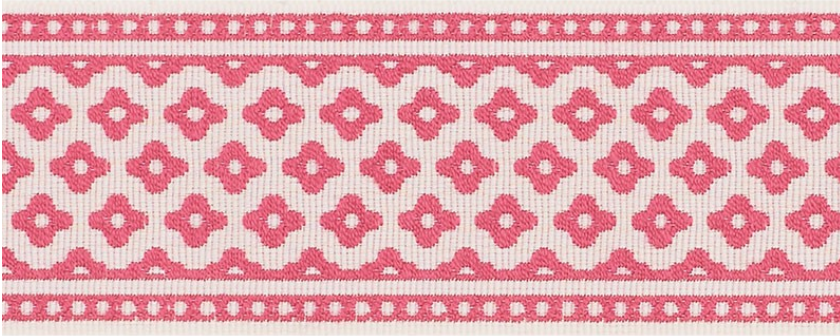


72313

CHERIE TAPE

COLOR: RASPBERRY TYPE: TRIM



WHAT MAKES THIS SPECIAL

Derived from Schumacher's Versailles pattern, Cherie is a versatile tape woven on a jacquard loom in Austria. It has a pretty floral motif and a sturdy ribbon construction.

To check stock and price, request a physical memo, reserve or place an order, sign in to your account on www.fschumacher.com or our iOS app, or give us a call at **1-800-673-4221**

WIDTH
2" (5CM)

VERTICAL REPEAT
3/4" (2CM)

CONTENT
100% ACRYLIC

LIGHT FASTNESS
40 HOURS

HORIZONTAL REPEAT
3/8" (1CM)

MATCH
STRAIGHT

PERFORMANCE
N/A

COUNTRY OF FINISH
CHINA

SCHUMACHER

FABRIC WALLPAPER TRIM FURNITURE CUSTOM/CONTRACT
RUGS AND CARPETS AVAILABLE AT PATTERSONFLYNNMARTIN.COM