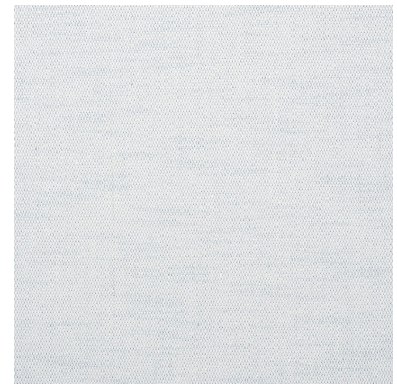
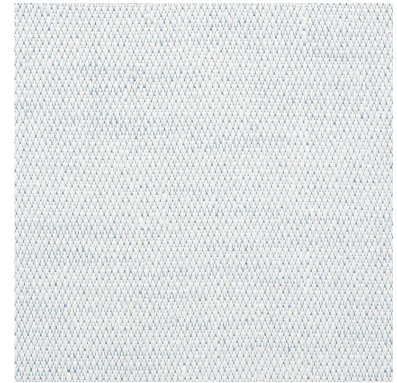


73873

CAMARILLO WEAVE

COLOR: CHAMBRAY TYPE: FABRIC



WHAT MAKES THIS SPECIAL

A high-performance indoor/outdoor linen blend, this miraculous diamond weave is remarkably durable and resists fading, moisture, stains and mildew.

To check stock and price, request a physical memo, reserve or place an order, sign in to your account on www.fschumacher.com or our iOS app, or give us a call at **1-800-673-4221**

WIDTH
55" (140CM)

VERTICAL REPEAT
NONE

CONTENT
92% LINEN, 8% ACRYLIC

LIGHT FASTNESS
6 YR GUAR

HORIZONTAL REPEAT
NONE

MATCH
STRAIGHT

PERFORMANCE
MARTINDALE 30,000

COUNTRY OF FINISH
FRANCE

SCHUMACHER

FABRIC WALLPAPER TRIM FURNITURE CUSTOM/CONTRACT
RUGS AND CARPETS AVAILABLE AT PATTERSONFLYNNMARTIN.COM