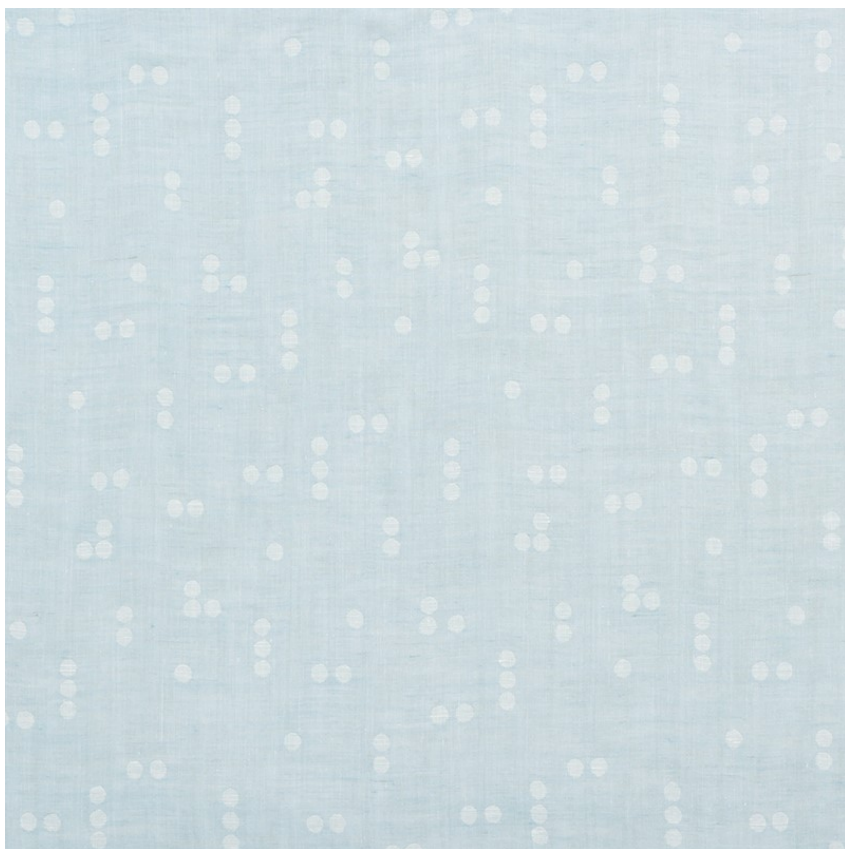


75620

GREAT ROCK SHEER

COLOR: SKY TYPE: FABRIC



**WHAT MAKES THIS SPECIAL**

A double-faced pocket weave designed by Caroline Z Hurley, Great Rock Sheer is reversible, extra wide—and perfect for seamless curtains.

To check stock and price, request a physical memo, reserve or place an order, sign in to your account on [www.fschumacher.com](http://www.fschumacher.com) or our iOS app, or give us a call at **1-800-673-4221**

**WIDTH**

117" (297CM)

**VERTICAL REPEAT**

23 1/2" (60CM)

**CONTENT**

51% LINEN, 49%  
POLYESTER

**LIGHT FASTNESS**

N/A

**HORIZONTAL REPEAT**

13" (33CM)

**MATCH**

STRAIGHT - SHOWN AS  
RAILROADED

**PERFORMANCE**

N/A

**COUNTRY OF FINISH**

SPAIN

**SCHUMACHER**

FABRIC WALLPAPER TRIM FURNITURE CUSTOM/CONTRACT  
RUGS AND CARPETS AVAILABLE AT [PATTERSONFLYNNMARTIN.COM](http://PATTERSONFLYNNMARTIN.COM)